



How to Create a Community Health Needs Assessment Report

1. From the homepage, click the “Create a Community Health Needs Assessment Report” button.



Create a Community Health Needs Assessment Report

2. Next, select a Region, and your Service Area. You can also select a Ministry under the Total Health Ministries tab. Once you’ve selected your report area, click the “Data Indicators” button.

3. Select indicators to include in the report by clicking the check box next to the data category or individual indicator.

4. Click the “Reports” button to select your report type.

5. Select a report type by clicking the “Open” button.



Trinity Health



CARES

University of Missouri Extension

Trinity Health System - Full Assessment Report

Location

Holy Cross Hospital - Silver Spring

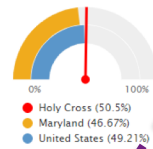
Economic Stability

Children Eligible for Free/Reduced Price Lunch

Within the report area 130,031 public school students or 50.5% are eligible for Free/Reduced Price lunch out of 257,479 total students enrolled. This indicator is relevant because it assesses vulnerable populations which are more likely to have multiple health access, health status, and social support needs. Additionally, when combined with poverty data, providers can use this measure to identify gaps in eligibility and enrollment.

Report Area	Total Students	Number Free/Reduced Price Lunch Eligible	Percent Free/Reduced Price Lunch Eligible
Holy Cross Hospital - Silver Spring	257,479	130,031	50.5%
Anne Arundel County, MD	81,407	25,839	31.74%
Howard County, MD	55,626	11,211	20.15%
Montgomery County, MD	159,010	55,831	35.11%
Prince George's County, MD	130,808	88,217	67.44%
Maryland	886,215	413,580	46.67%
United States	50,737,716	24,970,187	49.21%

Percent Students Eligible for Free or Reduced Price Lunch



Note: This indicator is compared to the state average.

Data Source: National Center for Education Statistics, NCES - Common Core of Data, 2016-17. Source geography: Address → Show more details



6. Explore your report by clicking the hamburger menu at the bottom right of the report. Click a category or indicator name to jump to another section.

Primary Care Physicians, Rate per 100,000 Pop.

Primary Care Physicians, Rate per 100,000 Pop.

Jump to...

Health & Healthcare

Access to Primary Care

Economic Stability

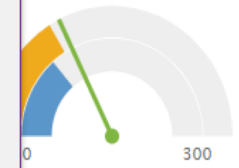
Food Insecurity Rate

Education

Education - Bachelor's Degree or Higher

Health Outcomes & Behaviors

Heart Disease (Adult)



Health Resource File, 2014. Source geography: County



7. Edit your report area, indicator selection, or report type by clicking the tabs at the top of the report.

Protected: Community Health Needs Assessment

1. Location

2. Data Indicators

3. Reports

Download PDF

Share

Print

Export Data

Trinity Health System - Full Assessment Report

8. To download, share, print, or export your report, click the buttons at the top right.



Trinity Health



CARES

University of Missouri Extension